

# APPLICATIONS OF MACHINE LEARNING AND AUXILIARY TUMOR TREATMENT IN THE PROCESS OF MEDICAL RESOURCE ALLOCATION

<sup>1</sup>Dr Udara Yedukondalu <sup>2</sup>Vijayalakshmi, <sup>3</sup>Dr.Swapna Thouti, <sup>4</sup>Dr.K.BasavaRaju

<sup>1</sup>Assoc Prof, Dept of ECE Sri Vasavi Engineering College(A), Tadepalligudem

<sup>2</sup>Assistant Professor Dept of IT KITS Warangal, TELANGANA STATE, INDIA.

<sup>3</sup>Assoc Prof Dept of ECE, CVR COLLEGE OF ENGINEERING TELANGANA STATE, INDIA.

<sup>4</sup>Assoc Prof, Dept of IT, ANURAG UNIVERSITY, HYDERABAD, TELANGANA,

## ABSTRACT

In the last decade, machine learning has become very interesting, driven by cheaper computing power and costly storage—so that growing numbers of data can be saved, processed and analysed effectively. Enhanced algorithms are designed and used to identify hidden insights and correlations between non-human data elements in broad datasets. These insights help companies to better decide and optimize key indicators of interest. Machine learning is becoming more common because of the agnostic use of learning algorithms. The paper presents a number of machinery and auxiliary tumour processes to assign health resources, and proposes a number of new ways to use these resources at the time of artificial intelligence in order to make human life part of this process and explore the good conditions which are shared by both the medical and computer industries.

**Keywords:** Machine learning, AI, Medical resource, Healthcare.

## INTRODUCTION

With the ongoing digitisation of medical data, as well as data from advanced medical equipment provided to us by the patient, we are becoming widespread with large volumes of patient data. One common outcome of the information revolution is the daunting task of data understanding and interpretation. It is not only overwhelming to gain the sense of such a vast data collection; manual tools and techniques that can be a slow and tedious process are often impossible to use. There is great need for data-driven approaches to computer science in order to help the understanding of the data. Such approaches can be used to analyze the medical information in order for patients and doctors to better decide critical health information. Both industry and academia now start to invest heavily in the application of data scientific technologies to support medical data analysis. The amount of data generated in medicine will grow quickly and in future years, data science will play an important role.

The growing impact of digital treatment on diagnostics and the handling of diseases in the near future has an increasing impact on daily life and Artificial Intelligence (AI) and Machine Training (ML). Tech advances in AI and ML have opened the way for self-contained tools to diagnose disease using big data sets to address the future challenges of human disease detection, particularly in cancer, early. ML is an AI subset that develops the neural network base algorithms for a machine to learn and solve problems such as the brain of humans [1, 2]. Deep Learning is, in turn, a subset of ML which imitates the ability of the human brain for processing images, objects, languages, drug-detection improvements, precision upgrades, diagnostics and human decision making. It can also work and propose an output without human monitoring [3]. DL can use the Artificial Network (ANN) to imitate human neuronal architecture, including medical imaging, and is composed of inputs, outputs and various hidden multi-stage networks that improve the processing power of machine learning; (Fig. 1).

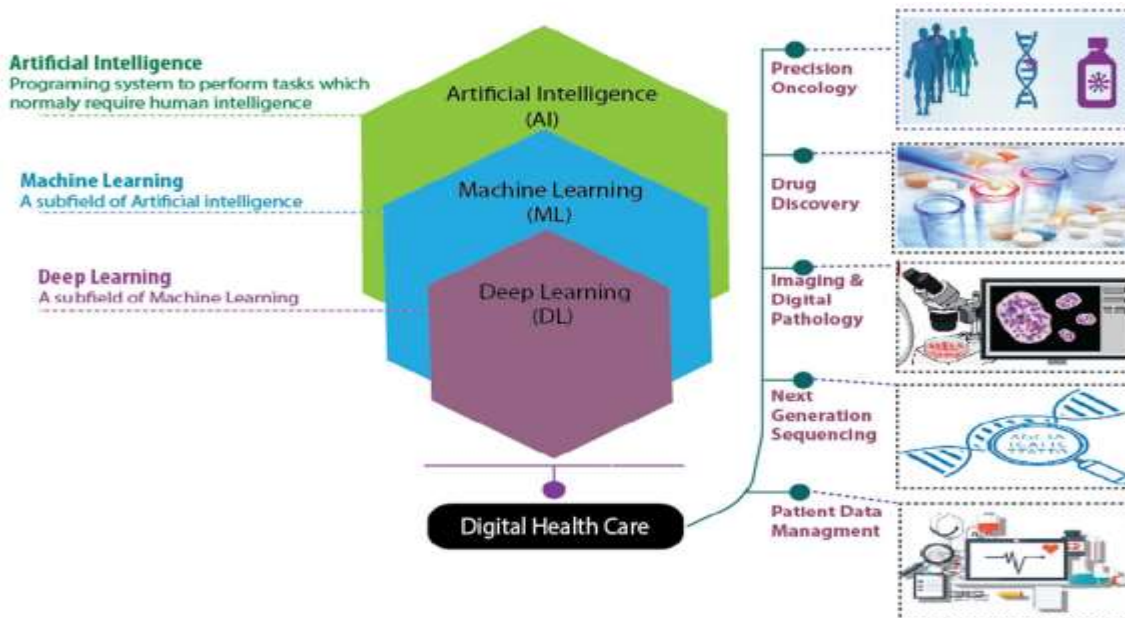


Fig. 1 Digital health and oncology applications for AI, ML and DL to solve health problems and predict the optimal result of treatment

In leaps and limits, AI increases. The clinical oncology research is now focused more on cancer molecular onset by decoding the complex biological architecture of the proliferation of cancer cells. The objective is to address the existing scenario in millions of relevant big data and computer biology of the increasing number of deaths from cancer in the world[6]. The use of AI in clinical decision-making should also increase the chances for early diagnosis and disease prediction in the form of NGS sequences and high-resolution imaging techniques. It would also lead to the introduction of new biomarkers for diagnosing cancer, the design of new personalised drugs and the provision of treatment strategies through the generation and use of bioinformatics.

### 1. SOURCES OF HEALTHCARE DATA

There are at least three data areas in the health sector that can be helped almost instantly by data science technologies:

#### Hospital Claims Data

In hospitals throughout the country, millions and millions of patients are treated every year. Data science technologies may contribute to understanding trends of visits to hospitals, diseases, injuries and effective methods of mitigating visits, population trends, and disease prevention based on the models of prediction. Understanding hospital information will also assist providers in making informed decisions on ways to improve the quality of care.

#### Patient's Clinical Data

Clinical information is the results of laboratories, user data, medical photos, correlating and classifying medical notes to improve support for clinical decisions (understanding health and wellness of patients and manifestations of diseases). Adding data from various sources makes it possible for medical professionals to see an overview. Increased population rates predict that clinical data will only grow quickly and therefore, as is mainly the case nowadays, virtually impossible, based on manual analysis.

#### Trial Data for Research & Development

Clinical data are lab results, user data, medical images, notes from doctors that are correlated and classified to improve support for clinical decisions (understanding health and wellness of patients and manifestations of diseases). Adding data from various sources makes it possible for medical professionals to see an overview. Increased population rates predict that clinical data will only grow quickly and therefore, as is mainly the case nowadays, virtually impossible, based on manual analysis.

### 3. APPLICATIONS OF MACHINE LEARNING IN MEDICAL CARE

#### A. Assisted tumor diagnosis

ML has been studied with the development of medical technology and Artificial Intelligence for tumour prevention, follow-up treatment etc. Currently, a relevant study is important in breast, lung and skin cancer. Researchers continue to promote other cancers research.

For example, SVM is a common method to use for taking treatments for breast cancer, dividing the tumour into benign and malignant and mapping them into multi-dimensional spaces, in order to relieve complex analysis in a relatively simple, twodimensional environment. It always selects the best hyperplane for splitting these data. CHEN et al.[1] found that the specific characteristics of cancer nests, cancer cell density and strom cell structure are of particular importance with respect to nuclear information in pathogenesis of breast cancers by data mining on the 1150 chromosome image of SVM Chen, and others. The use

of super hacking using 3121 breast tissues in the joint kernel to compensate for the semi-anticipating diagnosis breach from low to high. In large databases, brain cases, 88.1% retrieval accuracy and 91.3% rating accuracy were recorded in the 16.6m query time. Jaworek[3] has suggested a more accurate method to differentiate between melanoma in the field of skin cancer. He used Dermoscopic to pre-process images of skin in order to remove pieces not linked to symptoms of the skin. Then he segments and extracts images with colour characteristics. He used co-occurrence rendering of gray-level texture matrix, meanwhile. The level of skin cancer is assessed and its precision reached 92%.

## **B. Applications in medical imaging**

At present, when medical resources are limited, most people are unable to satisfy the effectiveness of the medical imaging test and the relevant results. It means ML will greatly reduce manpower and enhance the efficiency when used in medical imaging. Medical professionals in the areas of CT segmentation, RIM analysis and other medical pictures have favoured ML over the past several years.

Zhu[4] in his article suggests that the artificial neural network algorithm can be used to determine benign and malignant thyroid nodules with regard to ultrasound detection. A total of 618 patients and 689 thyroid nodules, no history of thyroid disease, no nose radiation history or ultrasound examinations. The Vascular features Doppler of each nodule have been built up by the neural system with the use of 0 and 1, respectively, to indicate the good quality of the neural nodule and the malignant system after morphology, margin, echo, inner combination, calcification, hail sign, color. There were 561 nodules in the study, which reduced the previous six unique and related qualities, to prevent excess training.

## **4. METHODOLOGY**

### **Machine learning – neural networks and deep learning**

Machine learning is a data fitting and 'learning' statistical technique for data training models. One of the most popular forms of IA is machine learning. In the Deloitte 2018 survey of 1,100 US managers whose organizations were already employees of AI, 63 percent of the companies surveyed employed machine learning in their enterprises.

1. There are many versions and a wide range of techniques at the heart of AI approaches. Precision medicine – which protocols are likely to be effective on the basis of a vast range of patient attributes and the therapeutic context – is the most common application of traditional machine-learning for healthcare.

2. The great majority of applications of mechanical learning and precision medicine demand a training data set which is known as supervised study for the outcomes variable (e.g. onset of diseases). A more complex type of machine training is the neural network, a technology that has been well-established in health research since the 1960s for a number of years 3 and that is used to determine if a patient has a particular disease for categorisation purposes. It views problems in terms of variables or 'features' associating input with outputs in inputs, outputs and weights. The way neurons process signals has been likened but the analogy with the function of the brain is relative weak.

### **The methylation method**

The methylating classifier was initially trained to sort medulloblastomas into subtypes by a consortium of dozens of scientists. In the end, the team led by Germany increased the effort to cover 100 or so known central nervous system cancers. The researchers made the classification available on-line when the initial results were published<sup>1</sup> in March 2018. Other scientists can upload methylation profiles and learn in a matter of minutes what type of cancer suits. They get a trust score that shows what the result is likely to be right. Every month about 1,000 such profiles are uploaded, says Andreas von Deimling, who was one of the project leading neuropathologists at the German Cancer Research Centre.

Although the New York State endorsed the use of the test by Langone, the website notes that the classifier remains a clinically validated tool for research. Initially training the classifier was performed on about 2,800 tumor samples, but the number has grown to around 60,000 since the Website was operational. "It is much greater than the entire lifetime of a single pathologist," says von Deimling. "With this system now we find new entities which no pathologist has ever defined with the sheer number of tumours." The system compares the data with its tumor list and puts the profile in a group, but the cancer receives little confidence if it is not fully matched. Pathologists examine samples with low scores and assign them to a new group and retrain the classifier if they have at least seven with same methylation profiles. Around 150 different cancer entities now are recognized by the classifier.

Hospital error rates could be reduced if the computer is able to find those cancer types. In the initial study, 12 percent of brain tumors were misdiagnosed by pathologists. The algorithm showed Snuderl says NYU has 12% to 14% of its patients with similar error rates. "This is not a small number of people who could simply benefit from the right diagnosis," says Snuderl.

Profiling methylation is costly — usually only large cancer research centres. Thus, scientists expect to identify subtypes by simple biomarkers. If, for example, they are able to discover differences that are visible by looking under a microscope at the stained tissue, many hospitals that do not have the resources to profile the methylation can make the same level of diagnostic sorting available. "If you first have a correct grouping, you can only develop these markers," says von Deimling.

### **Getting it right**

It can also be difficult to correctly diagnose cancers elsewhere in the body. It may be difficult to find out whether a person has prostate cancer and whether that cancer is aggressive enough or just to be monitored.

Although the majority of prostate cancers are diagnosed with biopsies from standard sites, this can result in a lack of real cancer. A more recent approach is using MRI imagery to combine various types of MRI scans. Using MRI imagery is a new approach. But highly trained radiologists don't always agree about the images, and even less experienced people are unfamiliar. "Achieving a certain level of radiology expertise, particularly in this diagnosis of prostate cancer MRI, requires a great deal of training," says Kyung Hyun Sung, a radiologist from the University of California, Los Angeles. The University has a radiologist's reading program and is a leading center in the treatment of prostate cancer with experts with 10 years of or more experience. This is not the rule, however. "Community hospitals in their ranks don't have this training or expertise," Sung says.

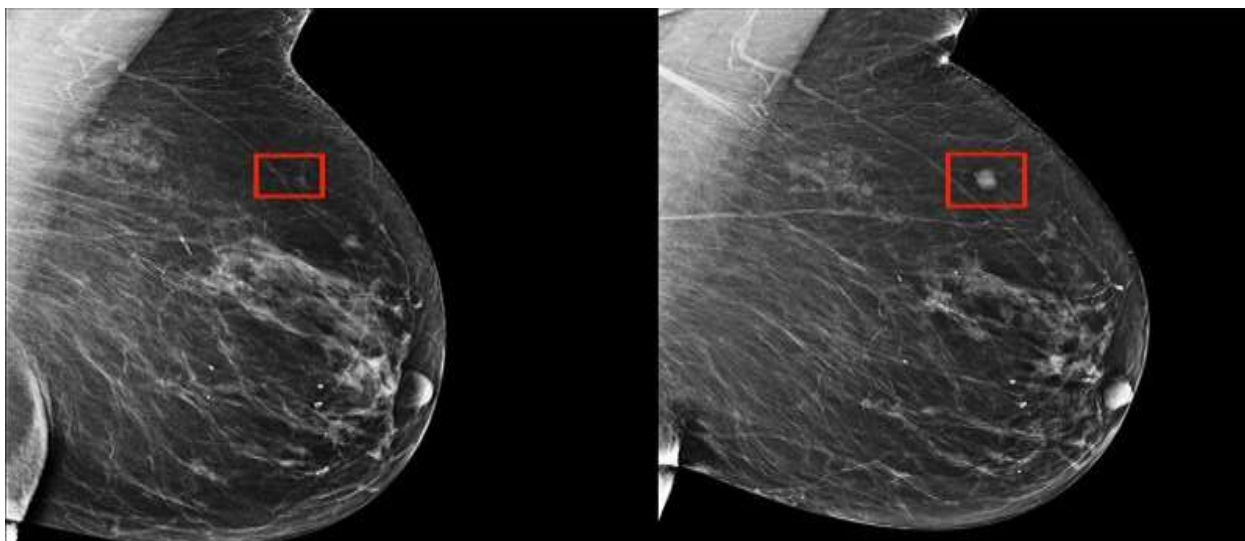


Figure 2: Four years (left) before a woman developed an AI system the potential breast tumor (right).

Sung creates an IA system called FocalNet to help physicians classify prostate cancer better with those hospitals in mind. Sung and colleagues collected around 400 preoperative MRI scans from persons who would have been operated to remove their prostate to train the programme. Researchers supplied the FocalNetscans together with the Gleason rating of the tumor, a malignancy rating that was determined by pathologists who analyzed the tissue after removal of the prostate. The system then searched for patterns in the MRI scans, which correspond to pathology.

### 5. RESULTS AND DISCUSSION

All of the point is a hyperplane that minimizes the cost function so that the data points can be connected to the best possible level.

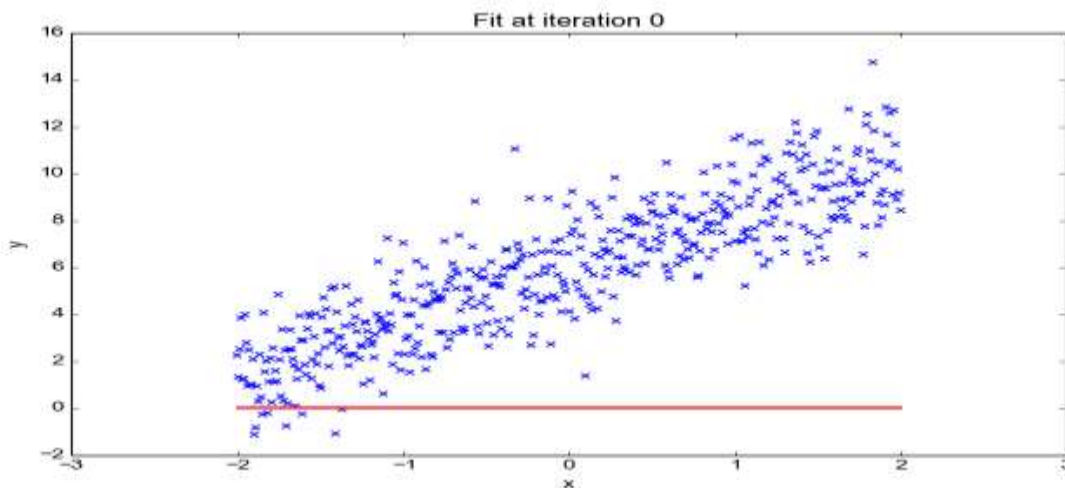


Figure 3: Linear regression to improve the relationship

It begins with a random line without a correlation, which through a gradient descent reaffirms the optimum relationship. The Gradient Descent algorithm is used for regression. By changing model parameters, this algorithm reduces the cost function.

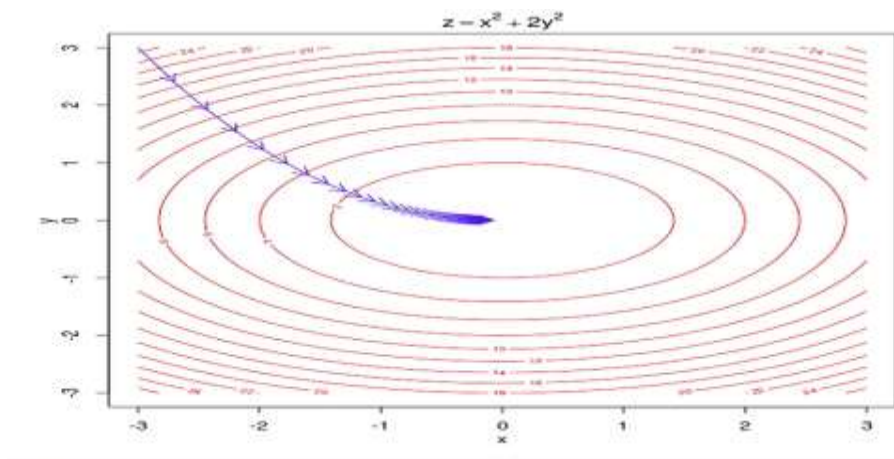


Figure 4: Think about the descents as you go down a hill to the lowest point.

In the meantime, the results are more accurate, as the decreasing gradient reduces the cost function down and down. That is how the regression helps to make your model more accurate to fit the data.

### Classification Categorizes Data Points Into Groups

Supervised learning models can do more than simple regress. One of ML's most important duties is classification. Classification algorithms establish boundaries between data points that classify them as a group, according to their properties, which correspond to the model parameters.

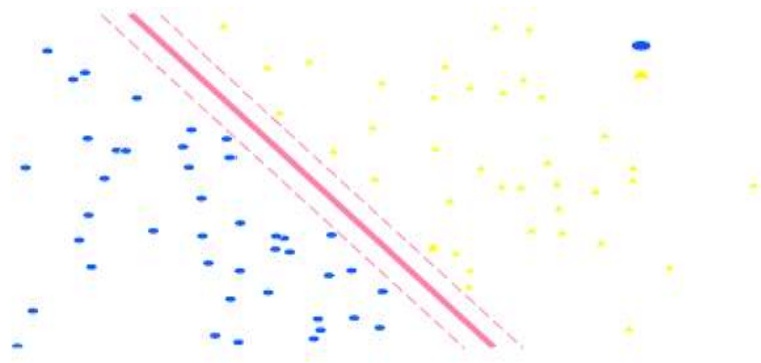


Figure 5: Either sheep or goat is classified by data points.

Data points are classified as sheep or goats in this model. This is subject to the average daily temperature depending on their steps. A process called logistic regression creates the boundary of the classes. The boundary does not depend on the data is an important fact to remember. Do you recall the cost function? Surprise! also used in the ranking.

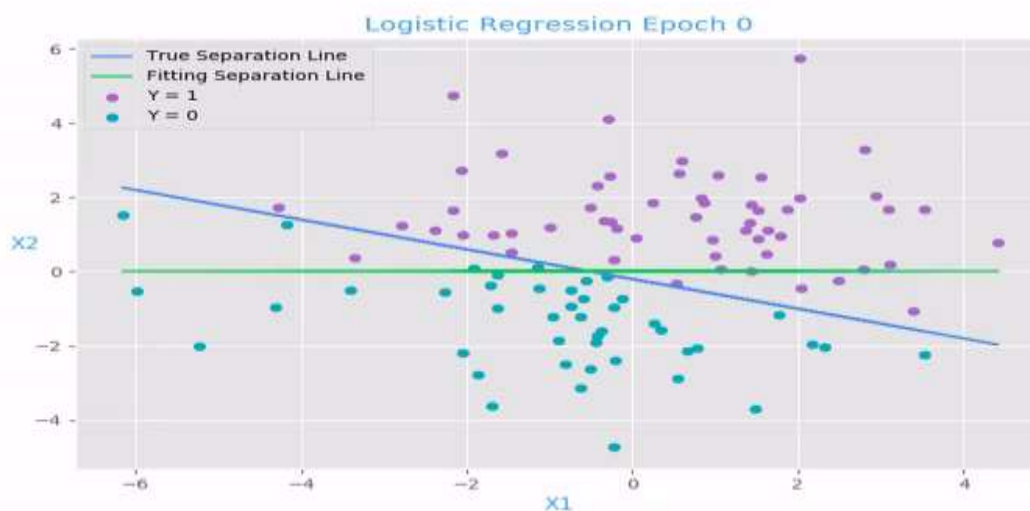


Figure 6: regression to find the best possible fit to the data

Similarly, regression is used to find the best fit of data in the classification.

## CONCLUSION

This article discusses the main methods of machine learning. After understanding the history and current application of medical machine learning, this article summarizes several representative applications. The typical concepts and algorithms are summed up. Operation, chemo, and radiotherapy are no doubts that for many years to come will remain the standard therapy for cancer but, at the same time, the scientific population is increasingly interested in further maturing the current clinical strategies for cancer. Input and assistance from computing are a true reality for the future clinical environment and lead to a major technological revolution that can be used for the prevention and real-time diagnosis of human health issues. AI avoids fatigue, cultural and moral convictions and emotional problems. Excellent decisions and continuous improvement with artificial neural networks and DL would quickly assist physicians in their diagnosis and cancer exploration. The capacity for processing an extensive amount of information and data is limited to natural people.

## REFERENCES

- [1] G. Eason, B. Noble, and I.N. Sneddon, "On certain integrals of Lipschitz-Hankel type involving products of Bessel functions," *Phil. Trans. Roy. Soc. London*, vol. A247, pp. 529-551, April 1955. (references)
- [2] Jiang M, Zhang S, Huang J, et al. Scalable histopathological image analysis via supervised hashing with multiple features[J]. *Medical Image Analysis*, 2016, 34:3-12.
- [3] Joanna J K, Pawel K . Automatic Classification of Specific Melanocytic Lesions Using Artificial Intelligence[J]. *BioMed Research International*, 2016, 2016:1-17.
- [4] Lu-Cheng, Zhu, Yun-Liang, Ye, Wen-Hua, Luo, Meng, Su, Hang-Ping, Wei, Xue-Bang, Zhang, Juan, Wei, Chang-Lin, Zou. A model to discriminate malignant from benign thyroid nodules using artificial neural network. [J]. *PLoS one*, 2013, 8(12):e82211.
- [5] Huang W C , Chang C P . Automatic Nasal Tumor Detection by grey prediction and Fuzzy C-Means clustering[C]// *IEEE International Conference on Systems*. IEEE, 2006. M. Young, *The Technical Writer's Handbook*. Mill Valley, CA: University Science, 1989.
- [6] Sarraf S , Tofighi G . Classification of Alzheimer's Disease using fMRI Data and Deep Learning Convolutional Neural Networks[J]. 2016.
- [7] Dou Q , Chen H , Yu L , et al. Automatic Detection of Cerebral Microbleeds from MR Images via 3D Convolutional Neural Networks[J]. *IEEE Transactions on Medical Imaging*, 2016:1-1.
- [8] Pang-ning Tan, Michael Steinbach, Vipin Kumar, *Introduction to data mining*, Beijing: Posts & Telecom Press, 2011
- [9] Xue-Hu WANG, *Study Liver Segmentation Method from CT Images based on Deformation Optimization and Sparse Statistics*[D]. Beijing Institute of Technology, 2015.
- [10] Yu Q , Jiang T , Zhou A , et al. Computer-aided diagnosis of malignant or benign thyroid nodes based on ultrasound images[J]. *European Archives of Oto-Rhino-Laryngology*, 2017, 274(7):2891- 2897.
- [11] Pedro Domingos, *The Master Algorithm: How the Quest for the Ultimate Learning Machine Will Remake Our World*, ISBN-10: 0465065708, 2015.
- [12] Bayesian Analysis. (2015, January 28). <http://www.britannica.com/EBchecked/topic/56811/Bayesian-analysis>.
- [13] Triola M. F. Bayes Theorem. Retrieved September 16, 2014 from <http://faculty.washington.edu/tamre/BayesTheorem.pdf>
- [14] Belavkin, R. "Feed-Forward Neural Networks" <http://www.eis.mdx.ac.uk/staffpages/rvb/teaching/BIS3226/hand11.pdf>
- [15] David E. Rumelhart (Author), James L. McClelland (Author), *PDP Research Group Parallel Distributed Processing*, ISBN-10: 026268053X, 1987.